

SKILL LEVEL

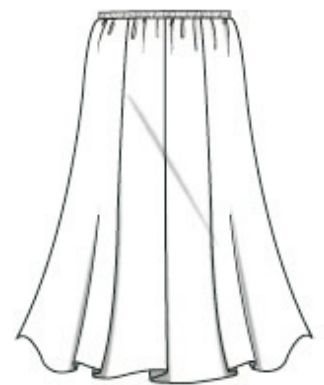


BEGINNER

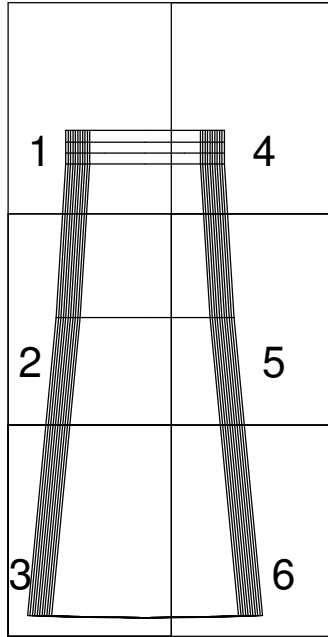
multisized
pattern...sizes
6/8/10/12/14/16
/18/20/22/24/26
all together!

www.hotpatterns.comtm
patterns so hot they're smokin'...

HotPattern & fabric.com exclusive download
Bossa Nova Swishy Gored Skirt



Swishy, swirly and unbelievably pretty, this super-simple skirt demands a floaty, drapery fabric...think of crepe and crepe de chine, charmeuse, fluid rayons and even sheers like chiffon and voile with a lining. Pull-on, gently flared 8-gore skirt has a narrow elasticated waist, and finishes just below the knee with a neat narrow hem. Wear this easy-to-make, easy-to-wear with a simple fitted T-shirt and ballet flats for Audrey Hepburn chic; try it dressed up with kitten heels and a chic fitted jacket; or team it with a cosy snug-fit cardigan or sweater and knee boots...this lovely skirt is set to become one of your go-to styles!



1

SIZE 26
 SIZE 24
 SIZE 22
 SIZE 20
 SIZE 18
 SIZE 16
 SIZE 14
 SIZE 12
 SIZE 10
 SIZE 8
 SIZE 6

STITCHLINE
 FOLDLINE
 WAISTLINE

2

SIZE 26
SIZE 24
SIZE 22
SIZE 20
SIZE 18
SIZE 16
SIZE 14
SIZE 12
SIZE 10
SIZE 8
SIZE 6

HIPLINE

3

SIZE 26
SIZE 24
SIZE 22
SIZE 20
SIZE 18
SIZE 16
SIZE 14
SIZE 12
SIZE 10
SIZE 8
SIZE 6

Hot Patterns & fabric

exclusive free download
bossa nova swishy gone
skirt panel
cut 4 pairs (8 panels in total)

Hot Patterns & fabric.com

exclusive free download bossa nova swishy gored skirt instructions page 1 of 1

SEAM ALLOWANCES & OTHER INFO

Seam allowances are 5/8" or 1.5 cm wide; all seams are sewn right sides together unless otherwise stated.

The waist of the skirt is finished with a folded-over elastic casing; the bottom edge of the skirt is finished with a narrow double-turned hem.

Skills needed include: seaming panels together; making & applying an elastic waist casing; working a double-turned narrow hem.

ABOUT THIS STYLE

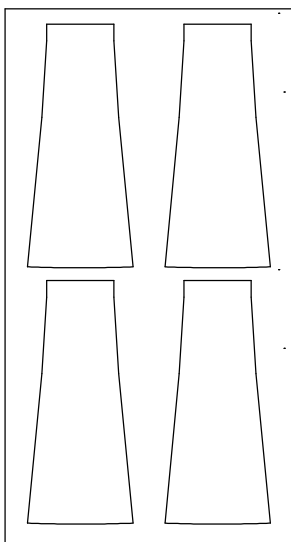
This skirt is an eight-gore, elastic waist pull-on style with a relaxed fit & flare silhouette.

Oh yes, as always, make & fit a muslin before you cut into your fabric...in this case, use a cheap fabric with a similar drape to your chosen fabric.

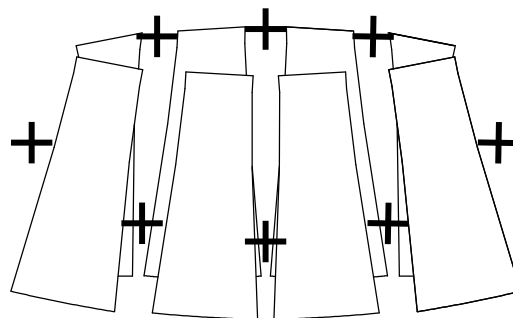
FABRIC & NOTIONS REQUIRED

All sizes need around 1 1/2 yards/ 140 cm of 60"/150cm wide fabric for this skirt. You'll also need enough 1/2" or 1.25 cm wide elastic to circle your waist.

SUGGESTED CUTTING LAYOUT FOR THE SKIRT
fold fabric in half, with selvedge to selvedge for this layout

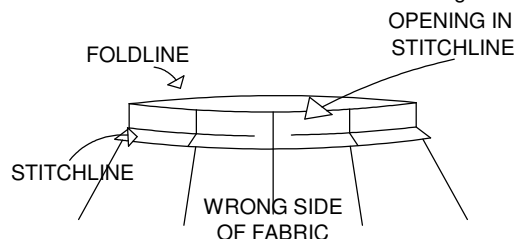


1 Join the eight skirt panels to create the basic skirt shape, then press all the seams open.



2a Press the waist elastic casing down inside the skirt; press along the foldline marked on the pattern.

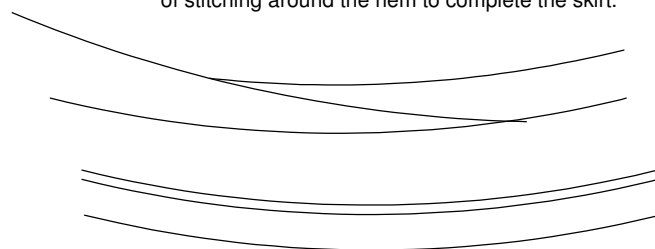
Stitch the waist elastic casing into place along the stitchline marked on the pattern, leaving a gap of about 2" or 5cm to thread the elastic through.



2a Cut your elastic so it measures the same as your waist. Push a large safety pin through the elastic, then use this to thread the elastic through the waist channel.

With the elastic ends through, join the ends, then close up the 2" or 5cm opening along the waist casing stitchline.

3 Press the hem up 1/4" or 0.5cm; then press it up again 3/8" or 1cm. Sewing through all thicknesses, work a row of stitching around the hem to complete the skirt.



Now try on your fabulous new skirt...
don't you look gorgeous?

SIZE 6	
SIZE 8	
SIZE 10	
SIZE 12	
SIZE 14	
SIZE 16	
SIZE 18	
SIZE 20	
SIZE 22	
SIZE 24	
SIZE 26	

4

SIZE 6
SIZE 8
SIZE 10
SIZE 12
SIZE 14
SIZE 16
SIZE 18
SIZE 20
SIZE 22
SIZE 24
SIZE 26

5

oric.com

nload
red skirt

tal) in fabric

SIZE 6
SIZE 8
SIZE 10
SIZE 12
SIZE 14
SIZE 16
SIZE 18
SIZE 20
SIZE 22
SIZE 24
SIZE 26

6